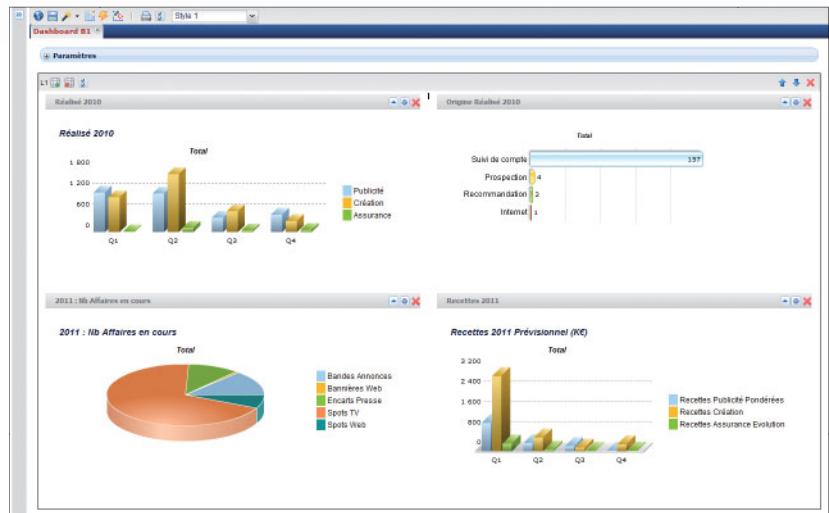


By making autonomous activities related to analysis and management, Coheris Liberty ideally meets the concrete needs for results and agility for business managers.

Still, Liberty Coheris goes further: all business expertise received thus becomes reusable by BI experts. That is the functional basis of the analytical applications that will be built and deployed by IT, for end users.



## References

Coheris Liberty is a major development of the Coheris Harry solution, from which more than 150,000 users have already benefited, in companies of every sector of business.

Among our references:

- Armée de terre
- Auchan
- AstraZeneca
- AXA
- BNP Paribas
- CANAL+
- Canon
- Cetelem
- CNP
- Dalkia
- GMF
- Hachette
- La Poste
- La Tribune
- MACIF
- Météo - France
- MGEN
- RATP
- Sanofi-aventis
- SFR
- Société Générale
- Sofinco
- Swiss Life
- Total
- UNEDIC

Coheris Liberty strikes a perfect synthesis between agile solutions for business and BI platforms for enterprise applications.

## To unlock the analysis potential of managers

All managers, whether marketing managers, commercial managers, HR managers... need to:

- regularly monitor the performance of the business
- analyze results and identify success factors
- share these analyses and make consulted decisions

For a manager, Coheris Liberty gives the ability to focus on the analysis of the business and make justified decisions:

- by getting an immediate handling of the situation, thanks to a very intuitive visual interface
- a very extensive agility in the exploration of data, their graphic restitution and the capacity to simply bring together the key elements in a dashboard.
- a very extensive autonomy, at any level: collect data from different sources, up to and including the publication of results on a portal.

Coheris Liberty allows you to retrieve, consolidate and make accessible the professional expertise to the greatest number of people. In other words, build business analytic applications that can be employed by all end users.

## The natural transition towards business applications

Coheris Liberty allows a BI expert to reuse the analytical components made by the business activity. These components are first industrialized before being assembled into new analytical applications, or integrated into existing business applications.

The unique Coheris Liberty approach thus combines guaranteed reliability, security, and personal accessibility to the company's applications, with those of the functional relevance and suitability to the business needs of the users.

## The Coheris Liberty Solution

Coheris Liberty is a combination of tools intended for business users and IT professionals, which includes:

### Coheris Liberty Insight

Insight provides professional experts with the ability to explore and analyze data from different sources. Its integrated «column oriented» database can handle large volumes of data in memory, with high performance.

The user interface provides a simple browser for all search and analysis functions: filtering, zooming, drill-down, axis rotation, etc. and a wide range of graphic objects.

The most relevant business views and indicators can be assembled into interactive dashboards and published on a portal that is accessible by those concerned.

### Coheris Liberty Studio

It is the "Swiss army knife" of the solution that allows you to quickly create reports of any kind: basic listing in a sophisticated catalogue, from a printed document to a mass distributed report.

It is an autonomous tool, capable of accessing all data sources: relationship databases, OLAP, Excel files etc. Access to these databases and their layout is carried out through a very elaborate interface.

Used both by professionals and (advanced) users, Studio is the perfect tool to meet your client relationship needs at any time and with complete independence.

### Coheris Liberty Enterprise

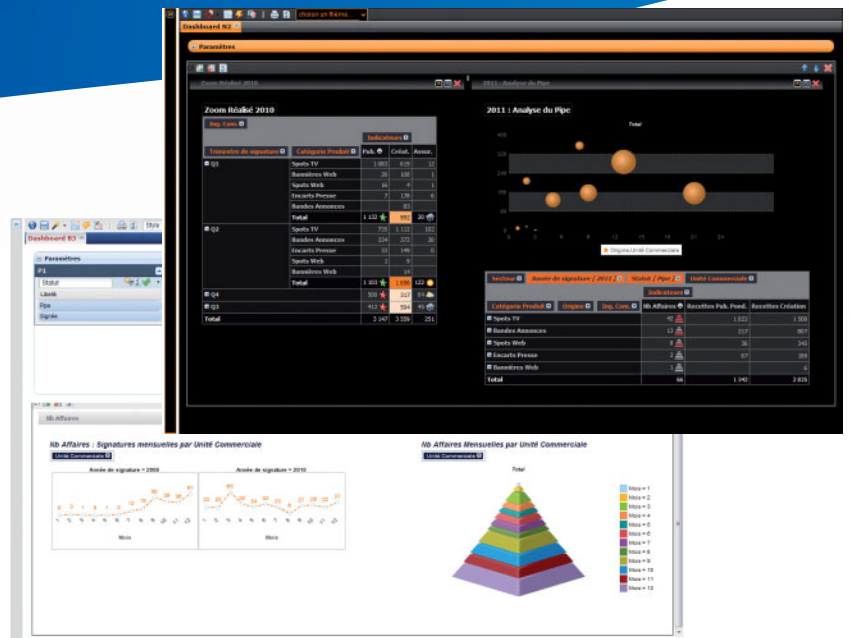
Enterprise is the platform used to develop and deploy BI applications in a prototype/industrialization launch.

The software brings together those elements developed by the business with Insight or Studio, and adds access controls, application processing, navigation facilities, etc. before bringing it all together in a packaged application for end users, who will immediately deploy it on the inter/intranet.

The company has an assembly workshop for the components in question, a server to deploy the final application and administrative and monitoring tools for when the application is in production.

## Key Points to remember

- Liberty Coheris makes data analysis and monitoring of business activity available to managers:
  - ensuring optimum use conditions and the greatest possible autonomy vis-à-vis the software
  - similarly, for the purposes of reporting, upon request, this can be sent by the users themselves.
- It allows the software to capture all the business expertise, to make the foundation for a firm's BI applications:
  - able to resolve many functional issues, enabling IT support employees to focus on the technical side,
  - its work is largely facilitated by a comprehensive assembly environment and application deployment.



## Technical Features

Architecture and environments:

- Web architecture, with the exception of Studio which is a Windows architecture
- J2EE application server
- Web browsers: Firefox, IE, and Chrome
- Databases:
  - Relationship: Oracle, DB2, SQL Server, Sybase, MySQL, Teradata, Postgate SQL
  - OLAP: MS Analysis Services, Essbase
  - Excel files

## Coheris: A Brief Overview

A French publisher on topics in the areas of customer relationship management, analytical control, and predictive analysis, Coheris places actionable knowledge in the heart of its uses and business strategies.

More than 1,200 companies, from SMEs to multinational corporations, have already placed their trust in Coheris in over 80 countries.

Coheris supported by an extensive network of consulting and integration partners and its own experts to provide its customers with solutions that are at once operational, analytical and predictive of the service rendered by their performance.

Coheris has been listed on the NYSE Euronext Paris exchange compartment C since June 30, 1999 (ISIN: FR0004031763 / ticker: COH) and is eligible for FCPI.

More information about Coheris can be found at: [www.coheris.com](http://www.coheris.com)

### Coheris

22 quai Gallieni  
92150 Suresnes  
Tel.: +33 (0)1 57 32 60 60  
Fax: +33 (0)1 57 32 62 00